



DEA No. RA0571996
FL License # CMTL-0003
CLIA No. 10D1094068

Certificate of Analysis

Compliance Test

HERBAL PHARM RX
5740 LOGAN ST
DENVER, CO 80216

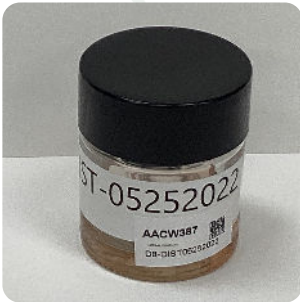
Batch # D8-DIST-05252022
Batch Date: 2022-05-25
Extracted From: Hemp

Test Reg State: Colorado

Order # HER220525-010001
Order Date: 2022-05-25
Sample # AACW387

Sampling Date: 2022-05-29
Lab Batch Date: 2022-05-29
Completion Date: 2022-06-01

Initial Gross Weight: 63.548 g



Product Image

Potency
Tested

**Delta 8/Delta 10
Potency 12**

Tested
SOP13.043 (LCUV)

Specimen Weight: 56.100 mg

Analyte	LOD (%)	LOQ (%)	Result (mg/g)	(%)
Delta-8 THC	0.000026	0.001	783.600	78.360
CBC	0.000018	0.001	<LOQ	<LOQ
CBD	0.000054	0.001	<LOQ	<LOQ
THCA	0.000032	0.001	<LOQ	<LOQ
Delta-9 THC	0.000013	0.1	<LOQ	<LOQ
Delta-10 THC	0.000003	0.001	<LOQ	<LOQ
CBN	0.000014	0.001	<LOQ	<LOQ
CBGA	0.00008	0.001	<LOQ	<LOQ
CBG	0.000248	0.001	<LOQ	<LOQ
CBDV	0.000065	0.001	<LOQ	<LOQ
CBDA	0.00001	0.001	<LOQ	<LOQ
THCV	0.000007	0.001	<LOQ	<LOQ

Potency Summary

Total Delta 8 78.360%	-	Total Delta 10 None Detected
Total THC None Detected	-	Total CBD None Detected
Total CBG None Detected	-	Total CBN None Detected
Other Cannabinoids None Detected	-	Total Cannabinoids 78.360%

Xueli Gao Lab Toxicologist
Ph.D., DABT

Aixia Sun Lab Director/Principal Scientist
D.H.Sc., M.Sc., B.Sc., MT (AAB)



Definitions and Abbreviations used in this report: Total CBD = CBD + (CBD-A * 0.877), *Total CBDV = CBDV + (CBDVA * 0.87), Total THC = THCA-A * 0.877 + Delta 9 THC, Total THCV = THCV + (THCVA * 0.87), CBG Total = (CBGA * 0.877) + CBG, CBN Total = (CBNA * 0.877) + CBN, Total CBC = CBC + (CBCA * 0.877), Total THC-O-Acetate = Delta 8 THC-O-Acetate + Delta 9 THC-O-Acetate, Other Cannabinoids Total = Total Cannabinoids - All the listed cannabinoids on the summary section, Total Detected Cannabinoids = Delta6a10a-THC + Delta8-THC + Total CBN + CBT + Delta8-THCV + Total CBG + Total CBD + Total THCV + CBL + Total THC + Total CBC + Total CBDV + Delta10-THC + Total THC-O-Acetate, Analyte Details above show the Dry Weight Concentrations unless specified as 12% moisture concentration. (mg/ml) = Milligrams per Milliliter, LOQ = Limit of Quantitation, LOD = Limit of Detection, Dilution = Dilution Factor (ppb) = Parts per Billion, (%) = Percent, (cfu/g) = Colony Forming Unit per Gram (cfu/g) = Colony Forming Unit per Gram, , LOD = Limit of Detection, (µg/g) = Microgram per Gram (ppm) = Parts per Million, (ppm) = (µg/g), (aw) = aw (area ratio) = Area Ratio, (mg/Kg) = Milligram per Kilogram, *Measurement of Uncertainty = +/- 10%

This report shall not be reproduced, without written approval, from ACS Laboratory. The results of this report relate only to the material or product analyzed. Test results are confidential unless explicitly waived otherwise. Accredited by a third-party accrediting body as a competent testing laboratory pursuant to ISO/IEC 17025 of the International Organization for Standardization.